

Dosimetric Measurements on ISS during quiet and disturbed periods

R. Beaujean, S. Burmeister, F. Petersen

University Kiel/IEAP

G. Reitz

DLR Köln/Flugmedizin

Instrumentation

Two modified DOSTEL units

***with enlarged LET range**

***and two operation modes**

were exposed on ISS during DOY 85-201

DOSimetry TELscope consists of two Si-detectors

315 μm thickness, 6.93 cm^2 area, distance 15 mm

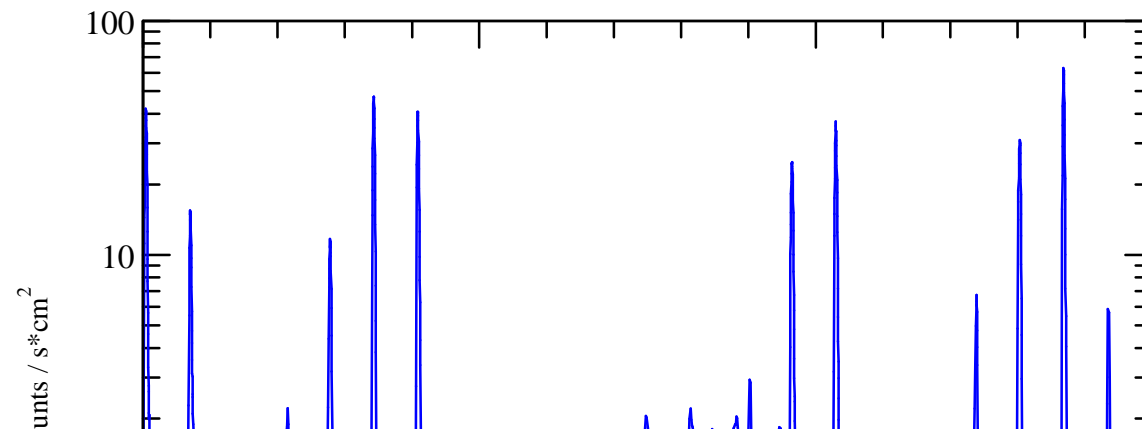
2x 256 channels PHA for LET = 0.1 – 250 $\text{keV}/\mu\text{m}$ (in water), different ranges in D1 and D2

Both units with similar viewing directions

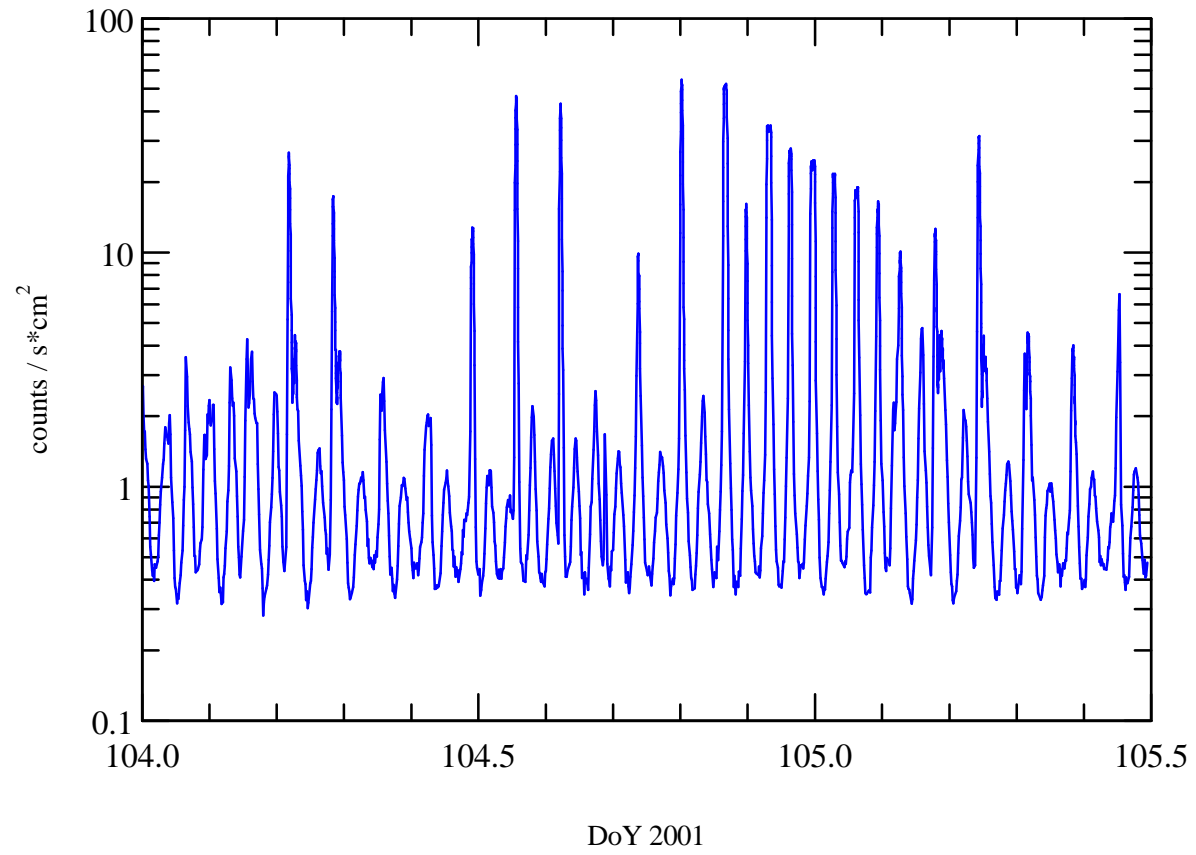
Two modes of operation:



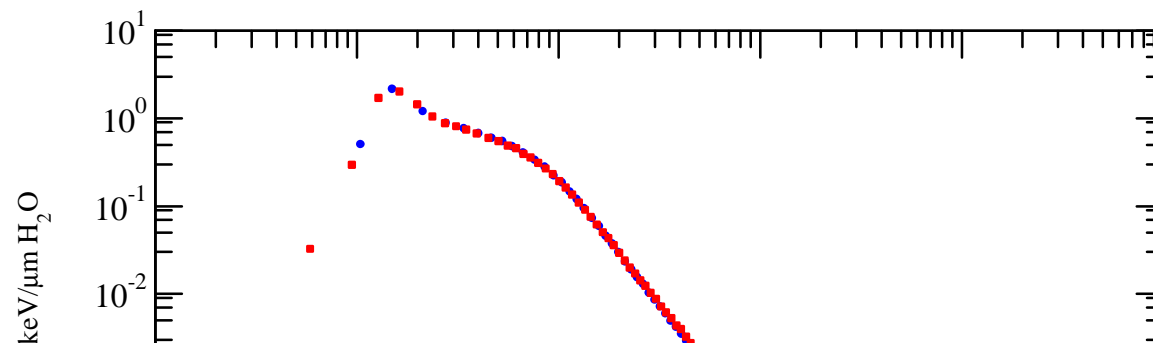
ISS DOSTEL D2



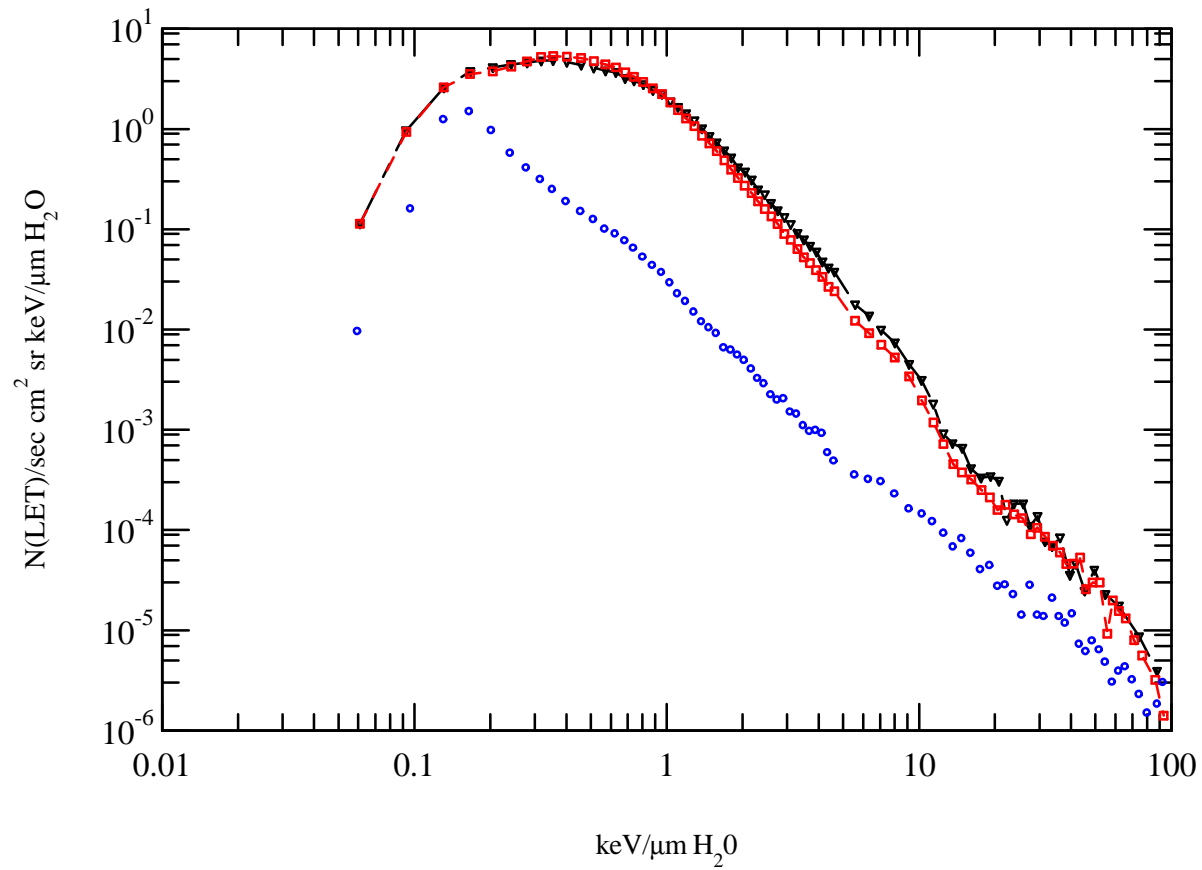
ISS DOSTEL D2



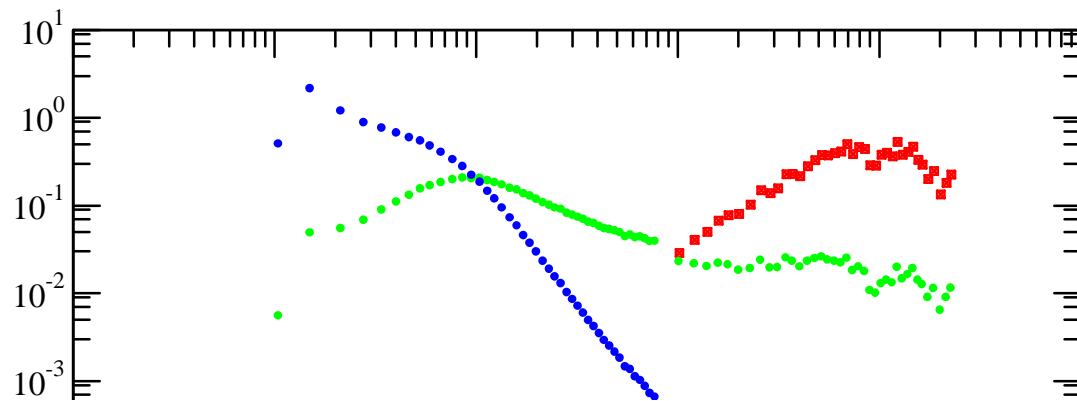
Period Averaged Spectra (dump of 20.07.01)



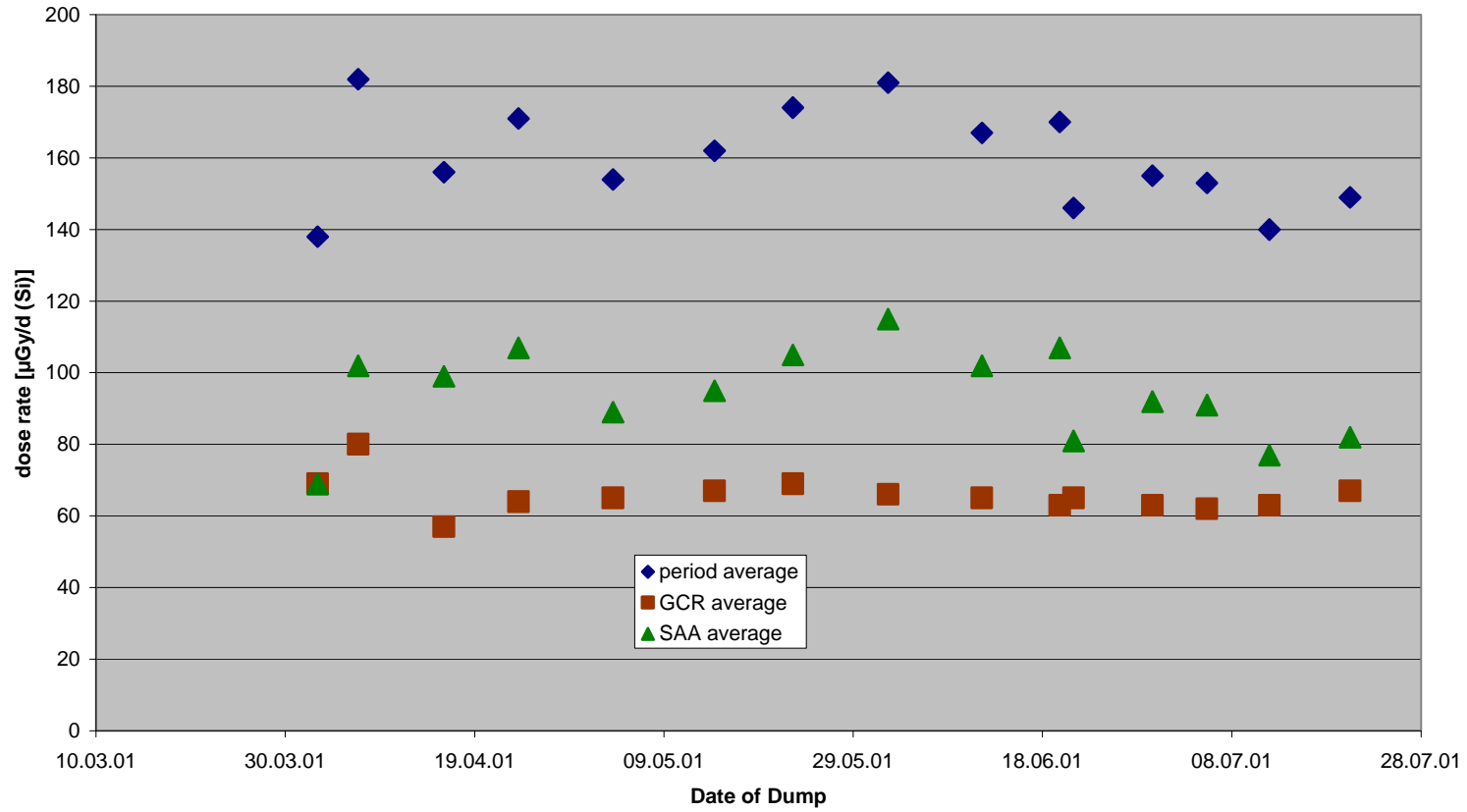
LET Spectra DOSTEL D2 onboard ISS



Period Averaged Spectra (dump of 20.07.01)



DOSTEL 1



DOSTEL 1

